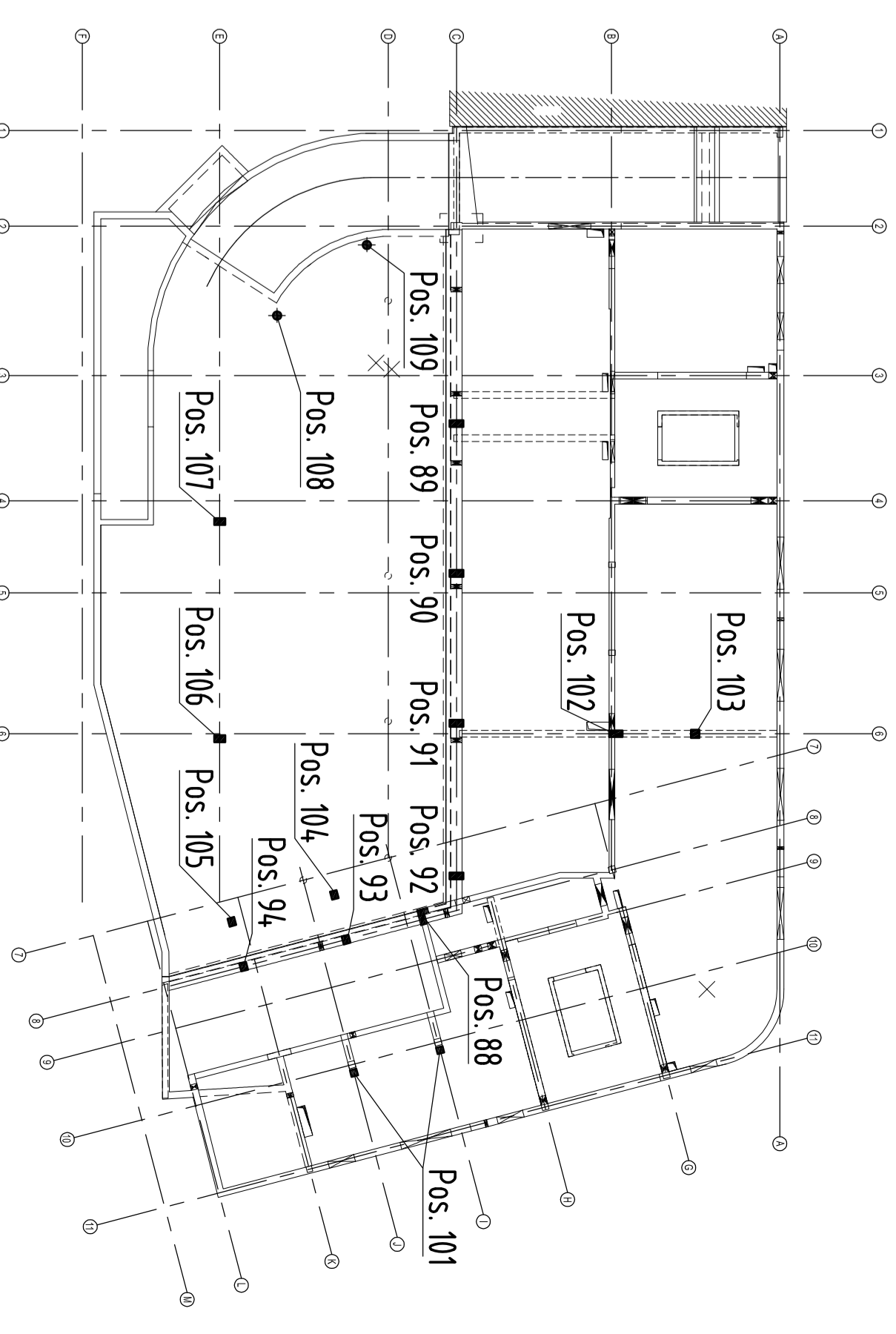
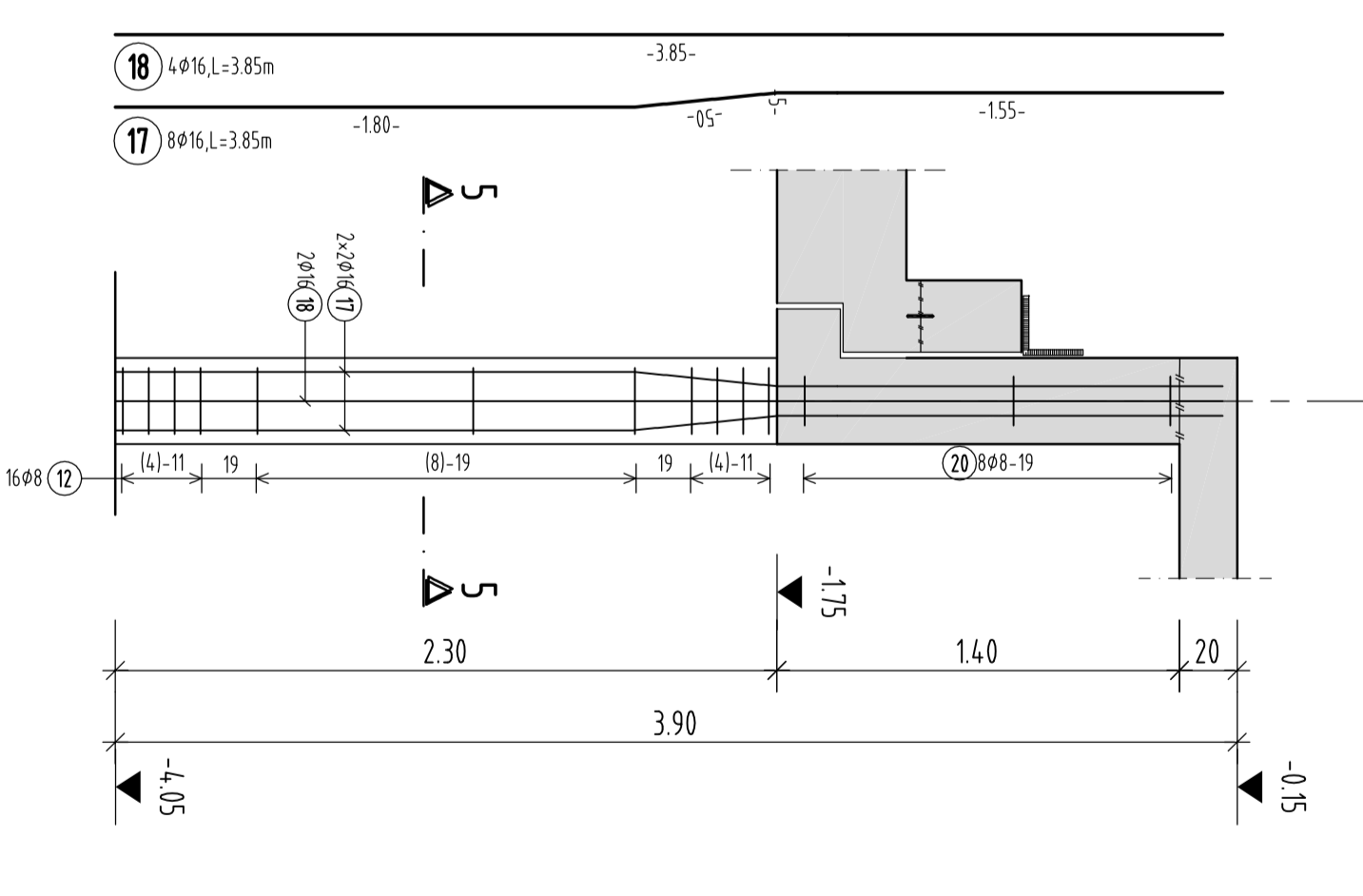


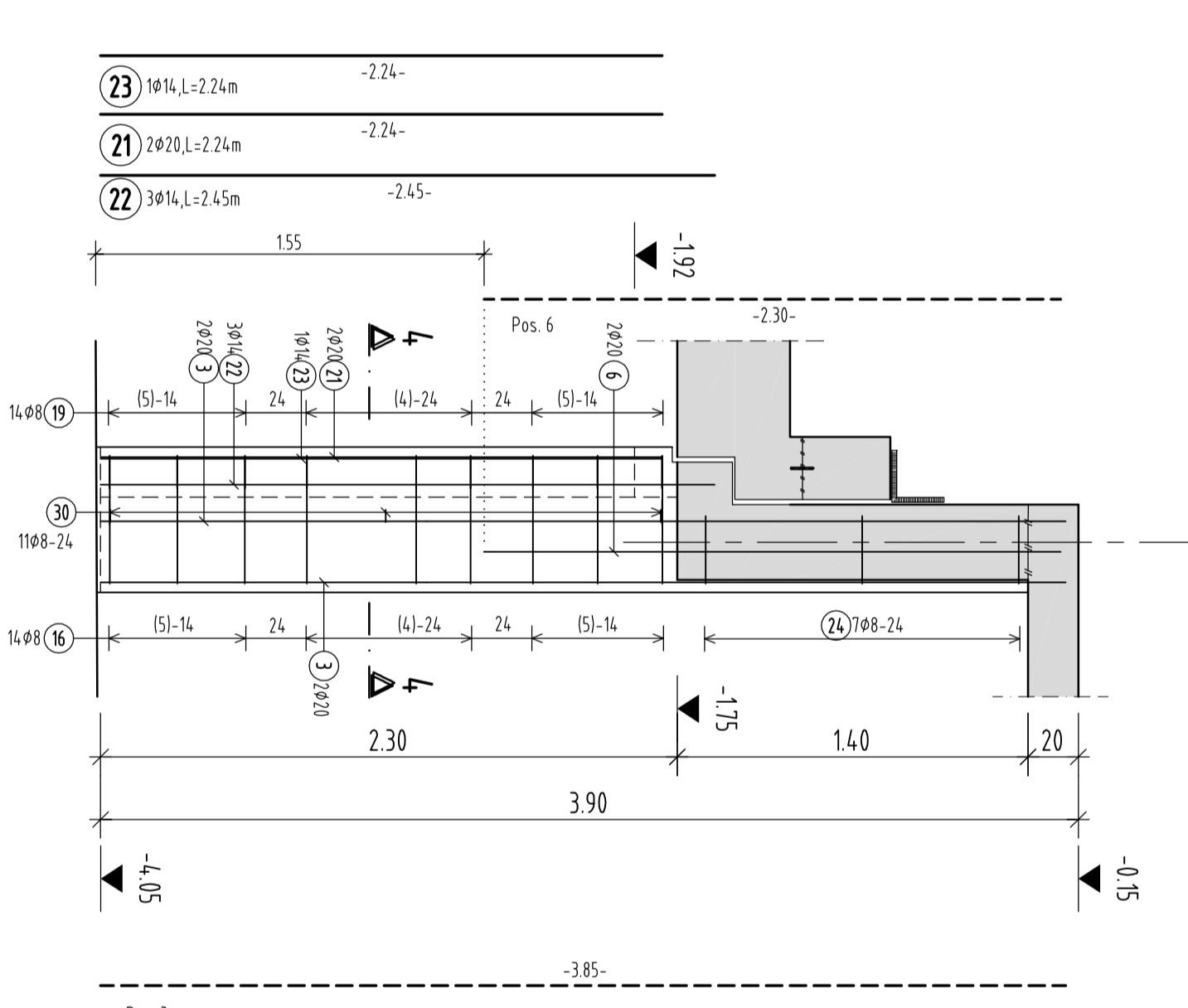
Übersicht
M 1:25



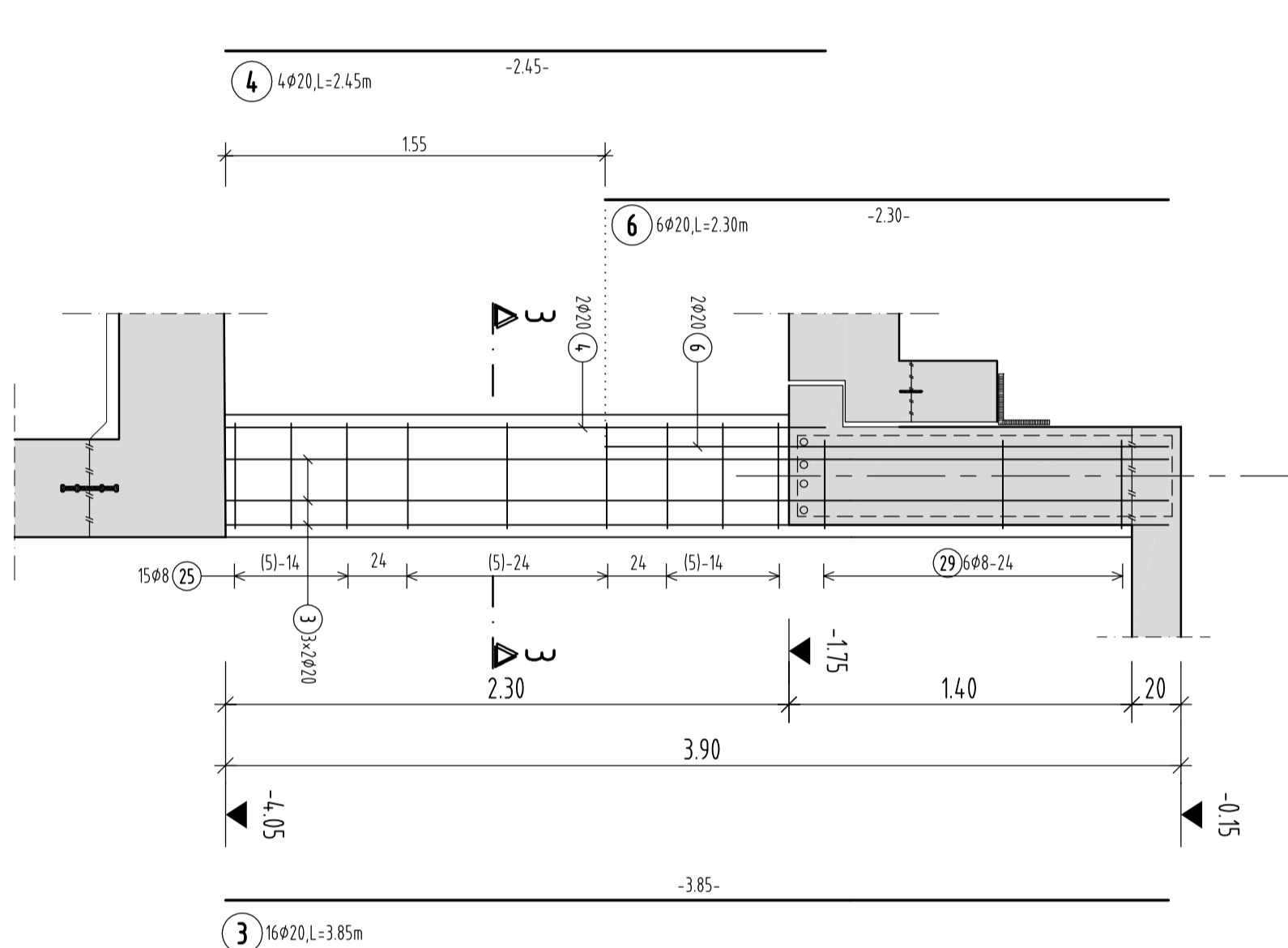
Zu Vorhanden
Stütze Pos.93,94
M 1:25



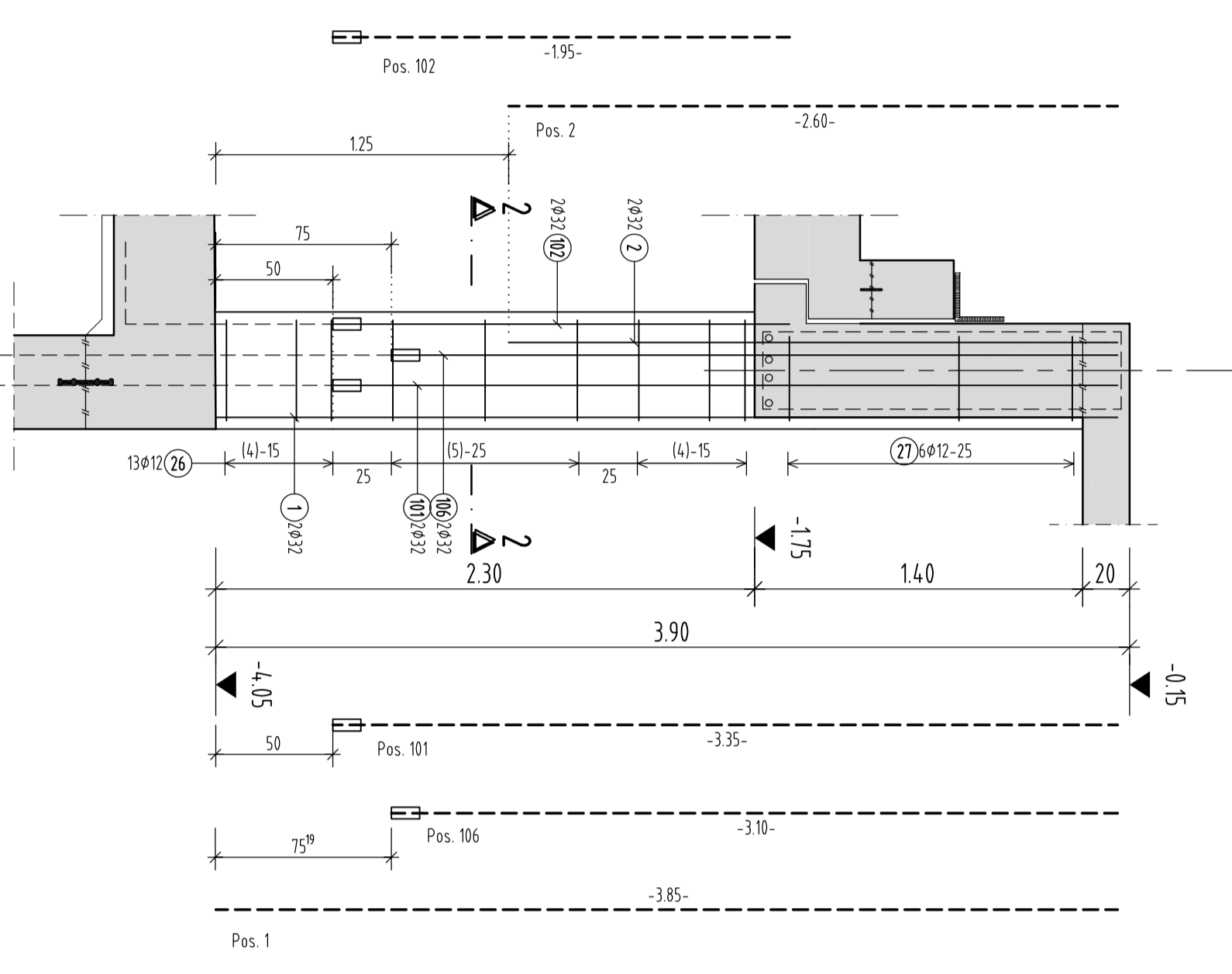
Zu Vorhanden
Stütze Pos.88
M 1:25



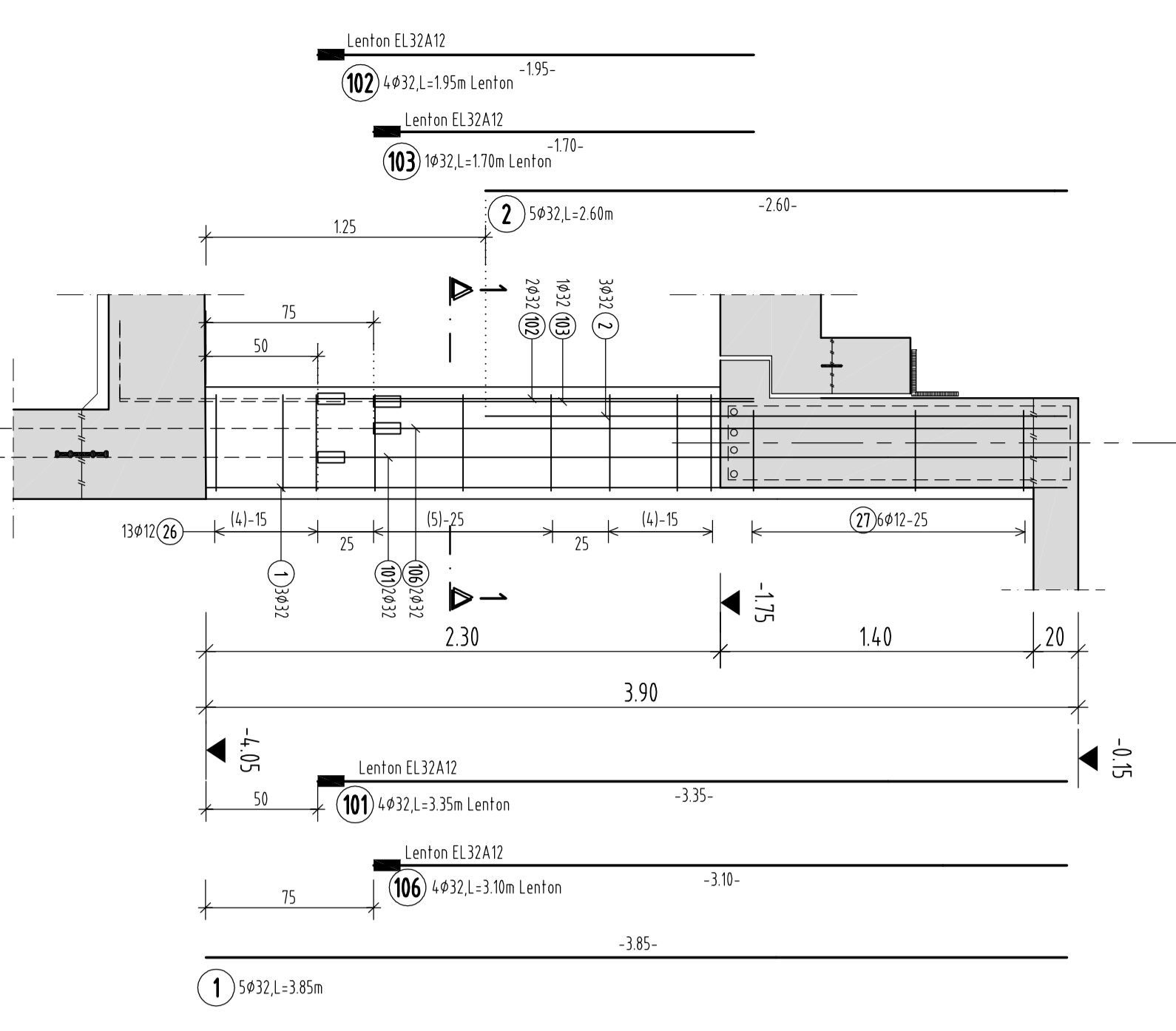
Zu Vorhanden
Stütze Pos.90,92
M 1:25



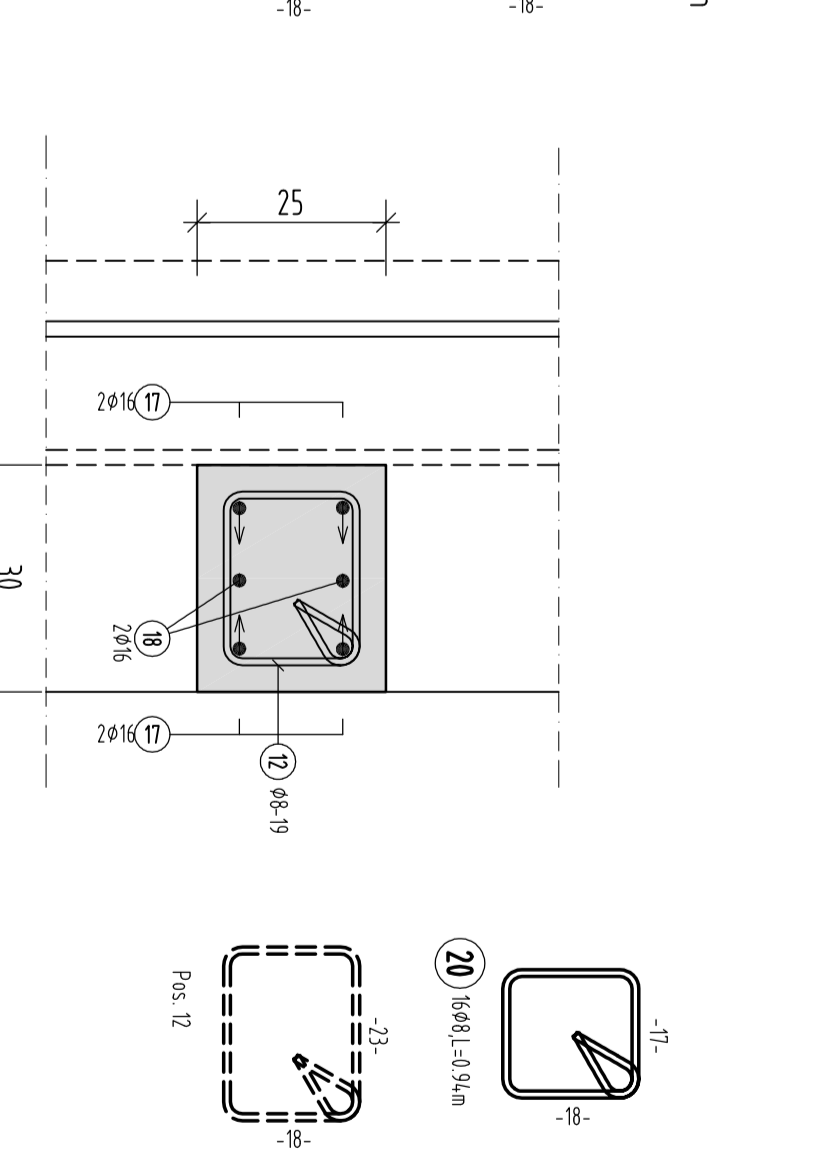
Stütze Pos.91
M 1:25



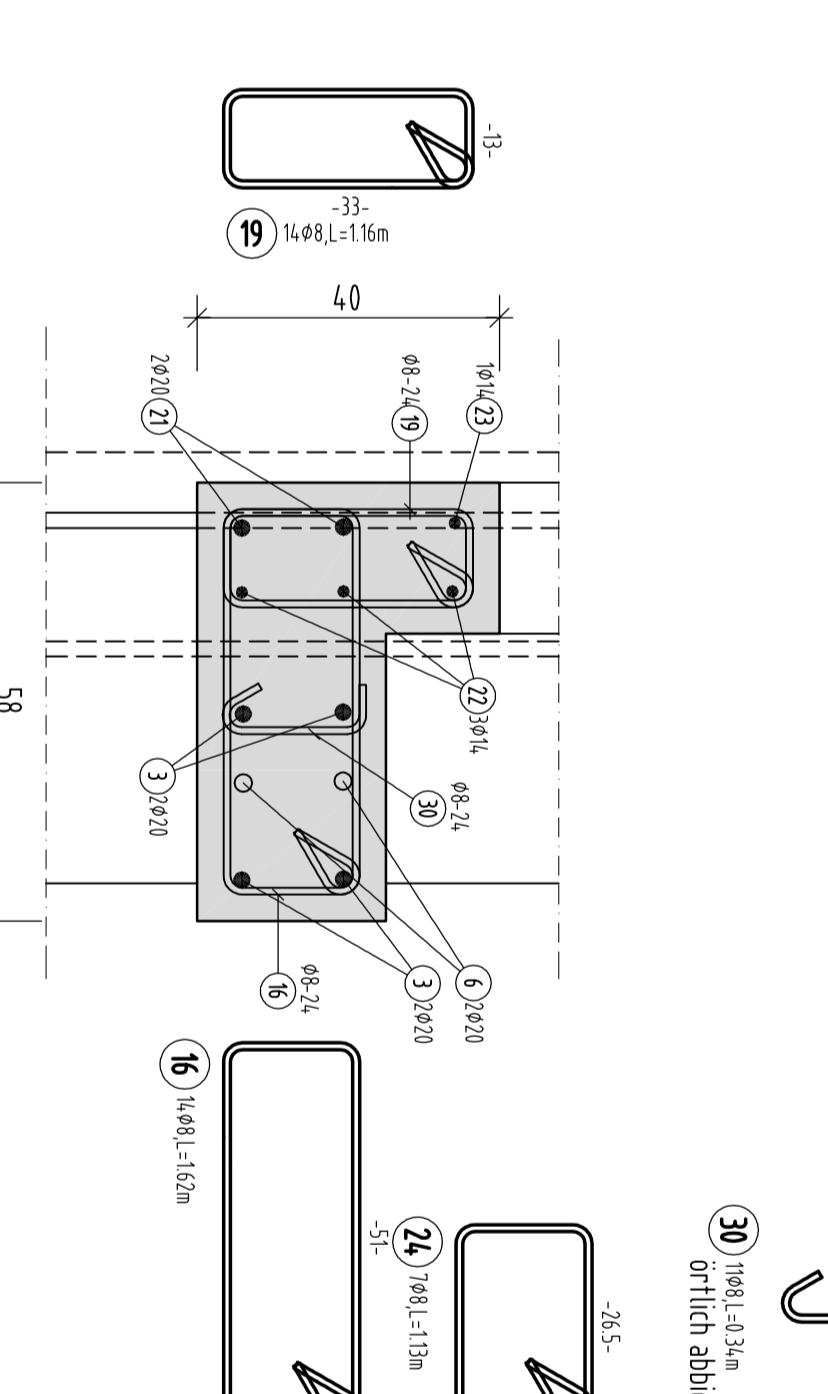
Stütze Pos.89
M 1:25



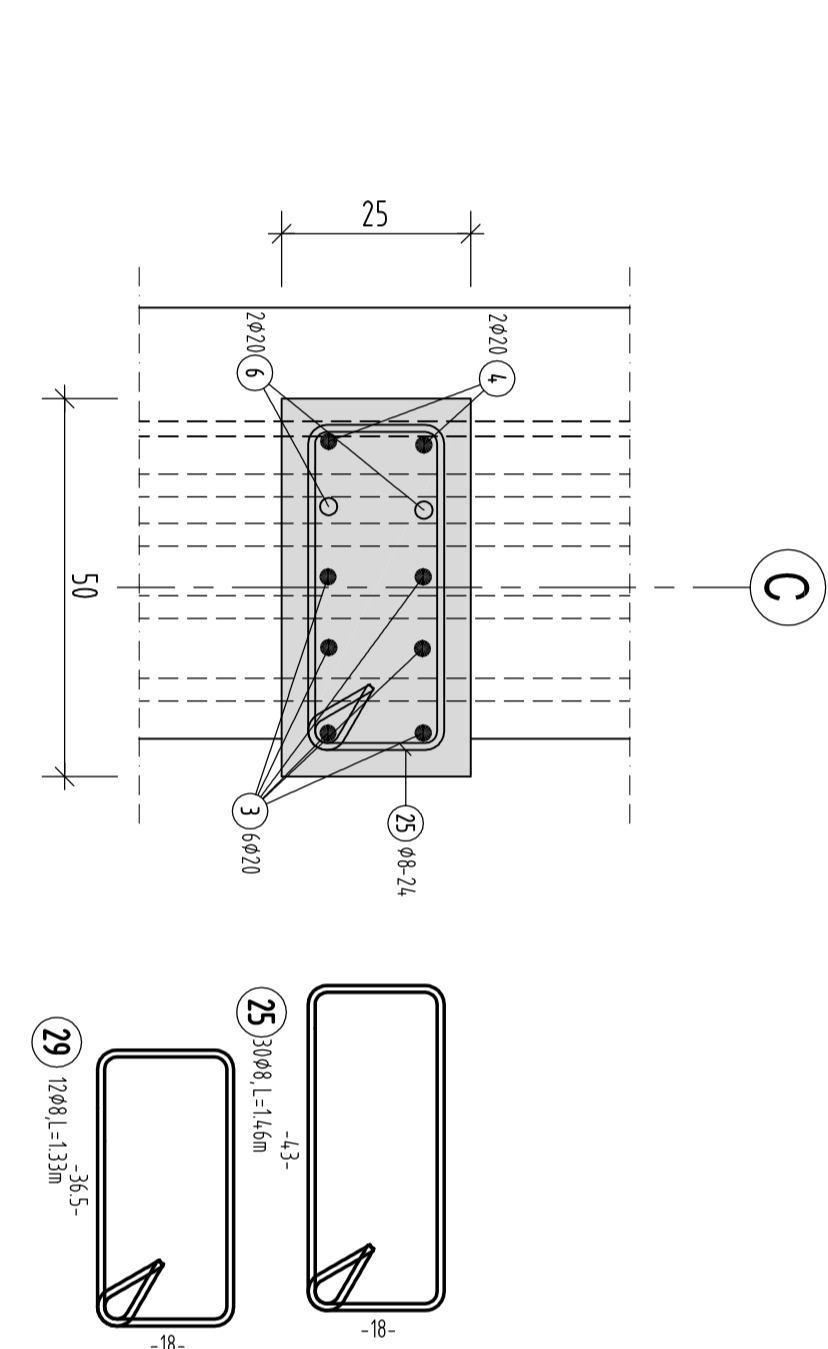
Schnitt 5-5
M 1:10



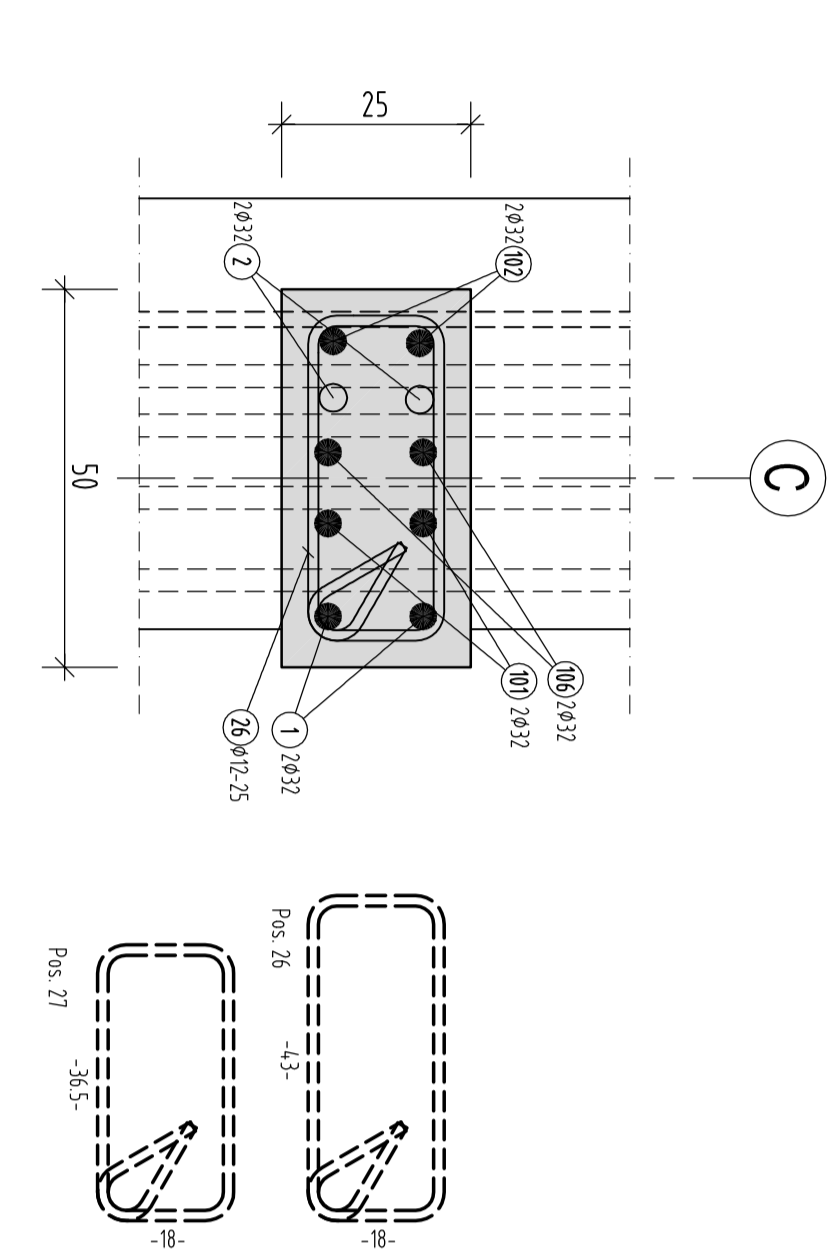
Schnitt 4-4
M 1:10



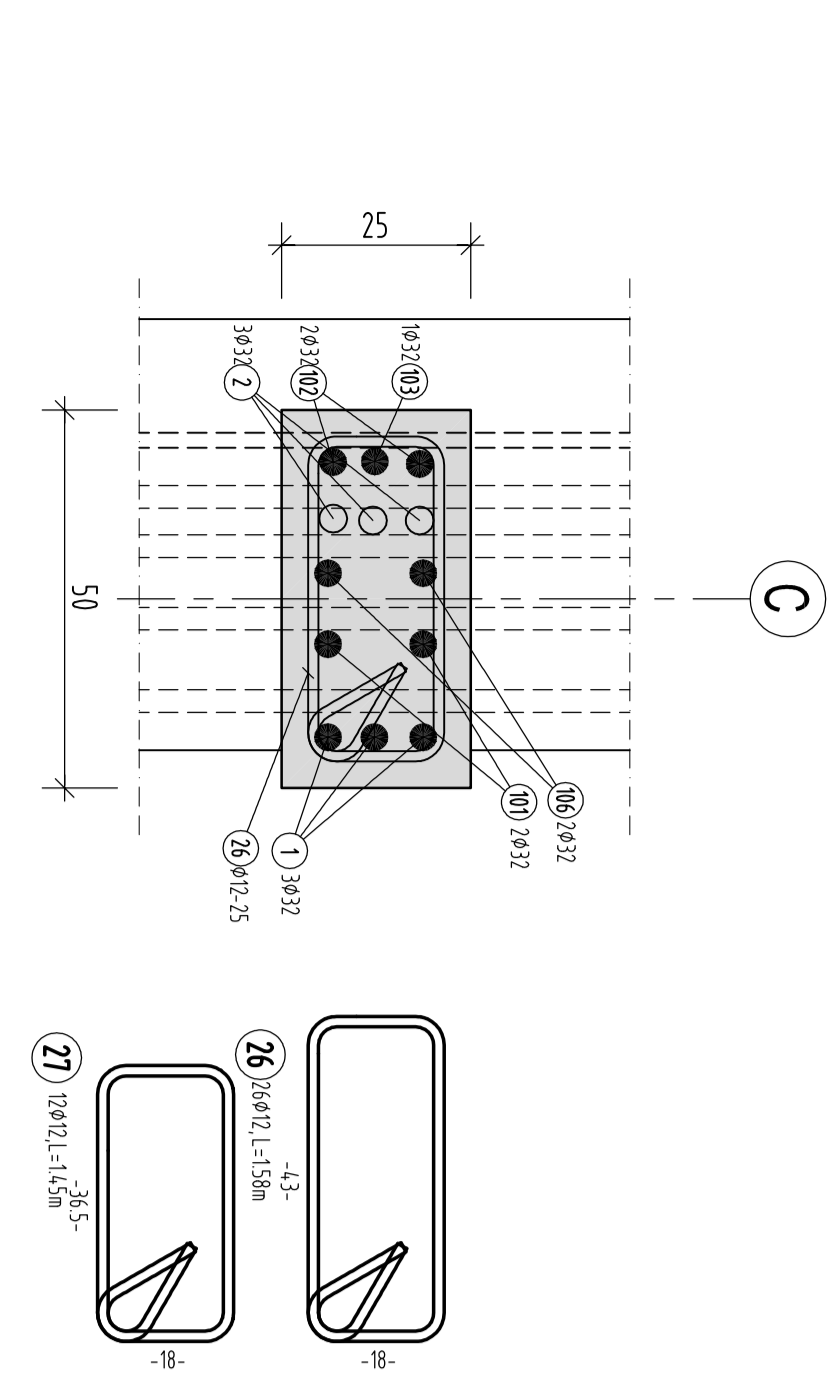
Schnitt 3-3
M 1:10



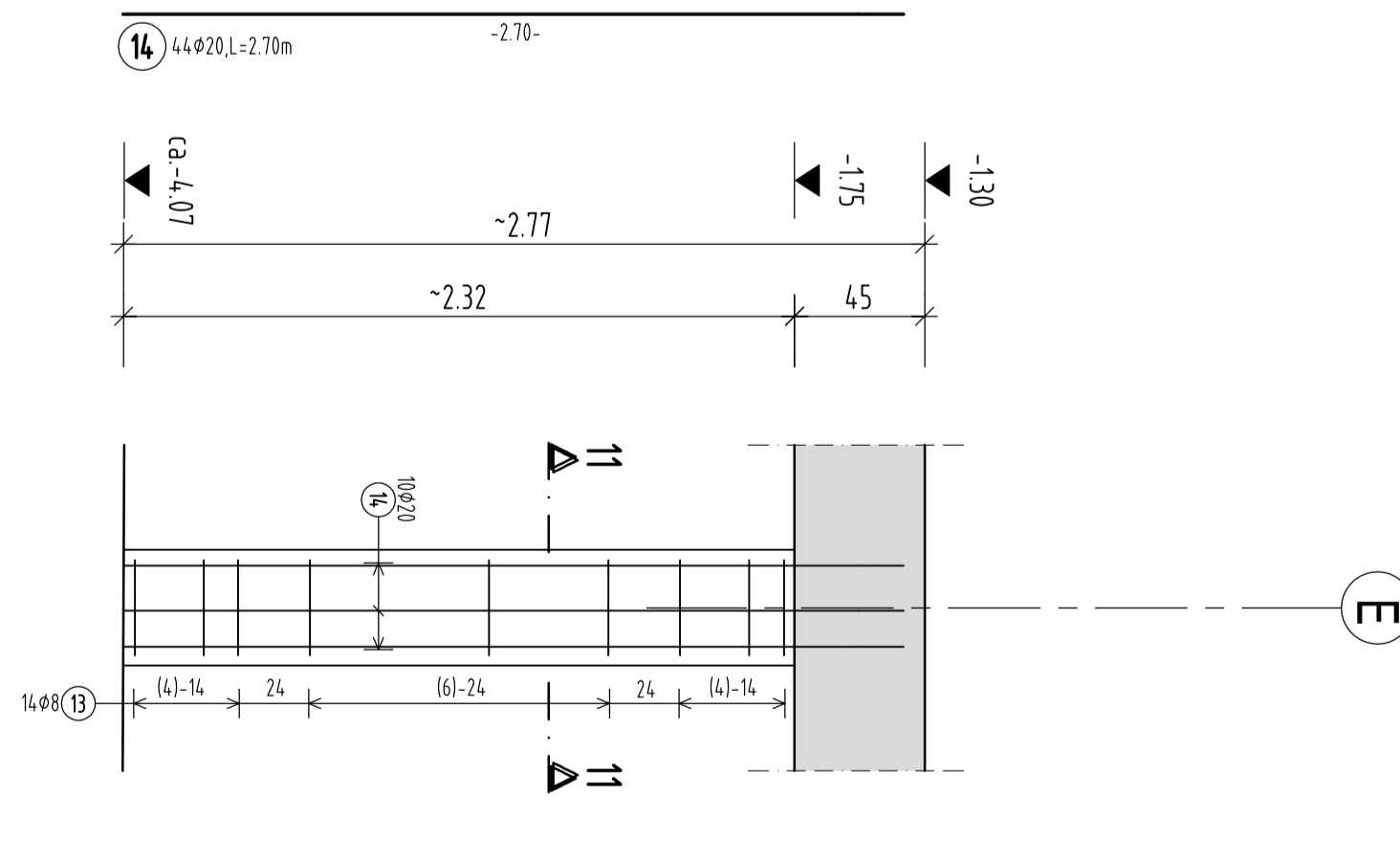
Schnitt 2-2
M 1:10



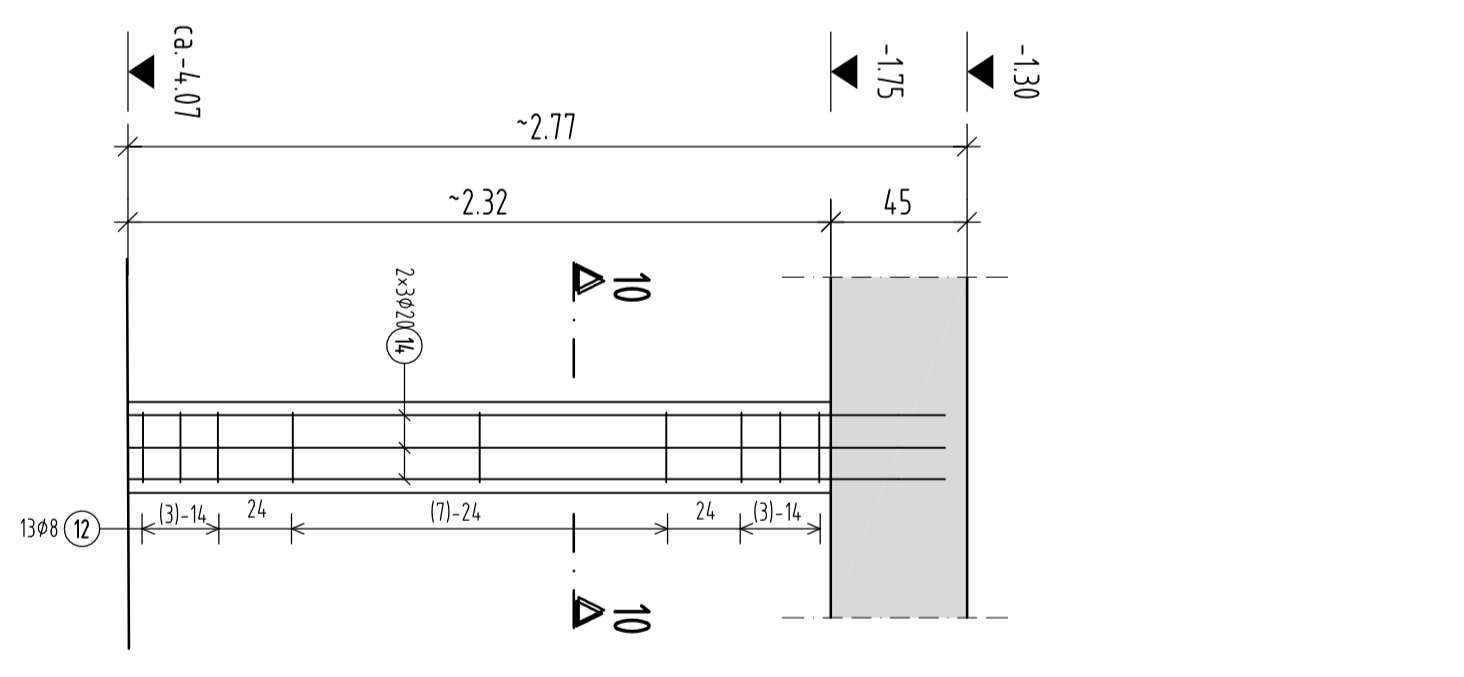
Schnitt 1-1
M 1:10



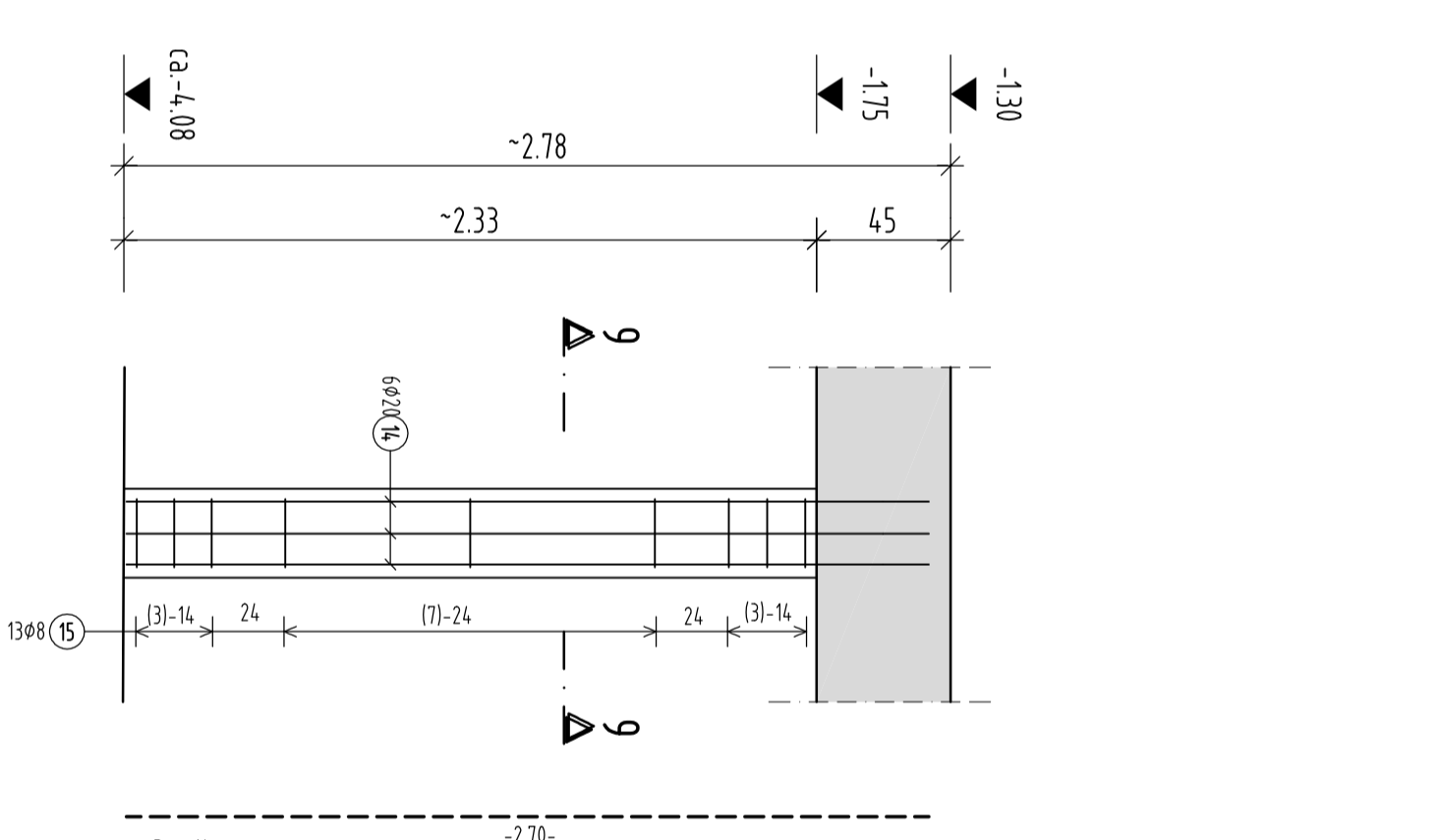
Zu Vorhanden
Stütze Pos.106,107
M 1:25



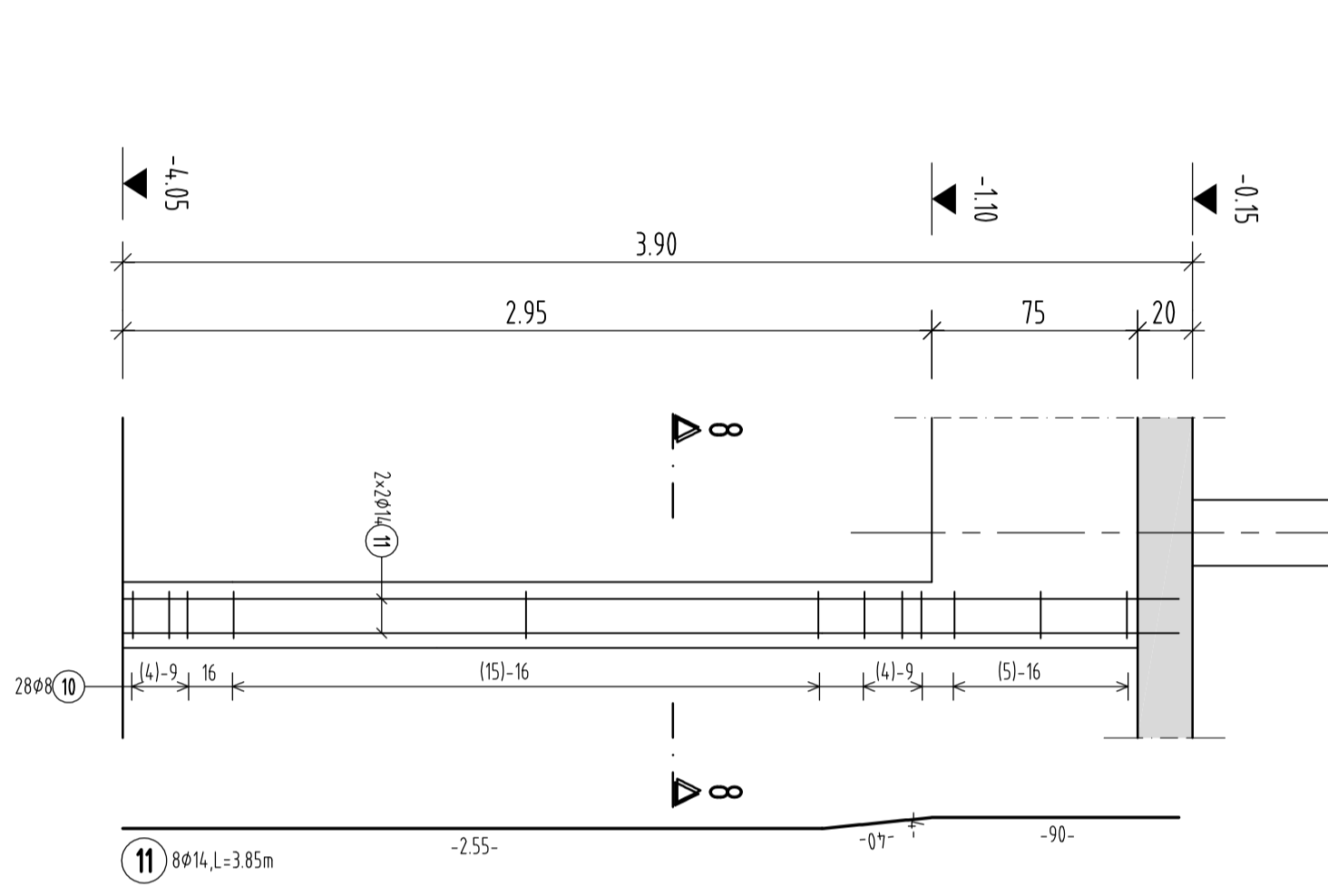
Zu Vorhanden
Stütze Pos.104,105
M 1:25



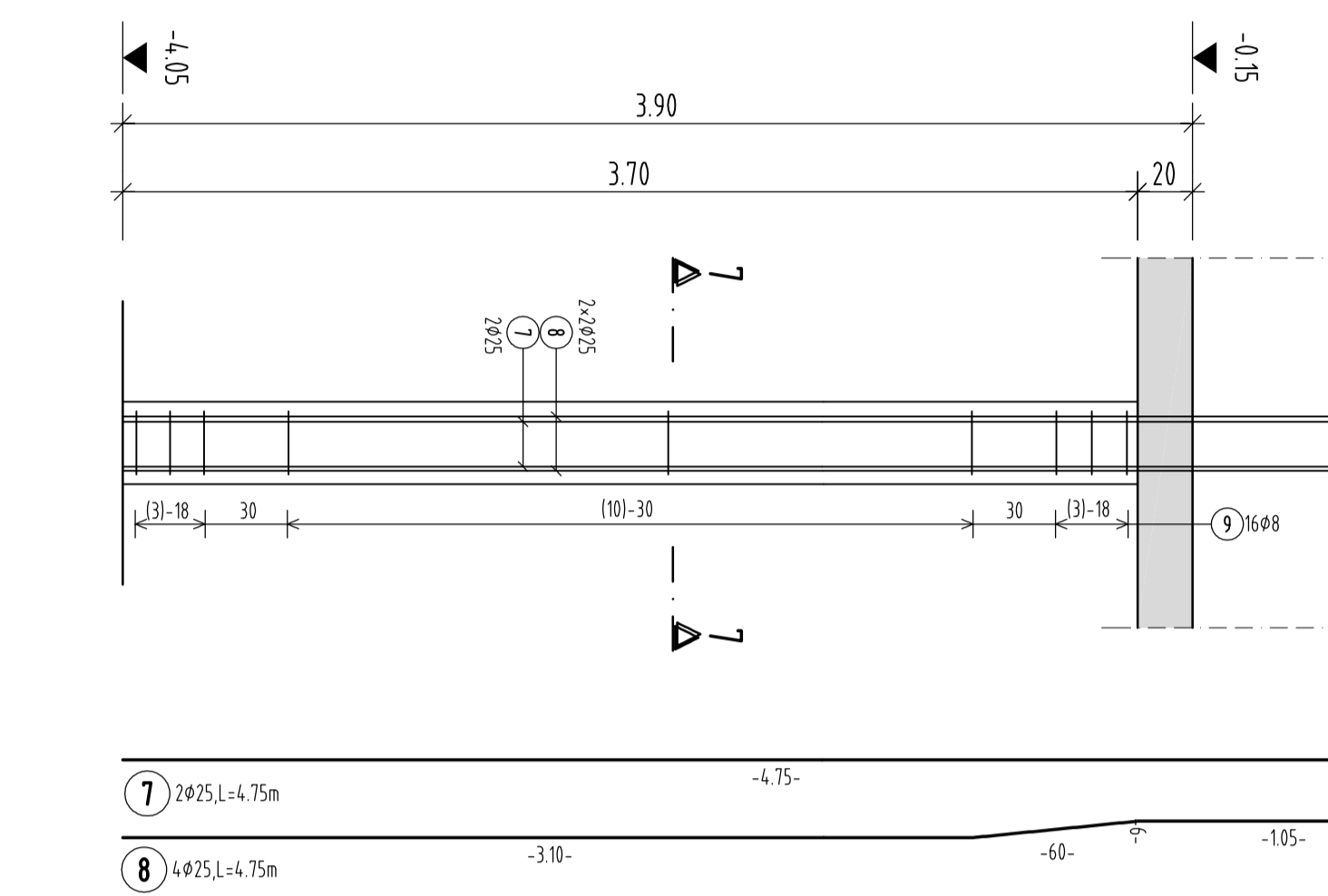
Zu Vorhanden
Stütze Pos.108,109
M 1:25



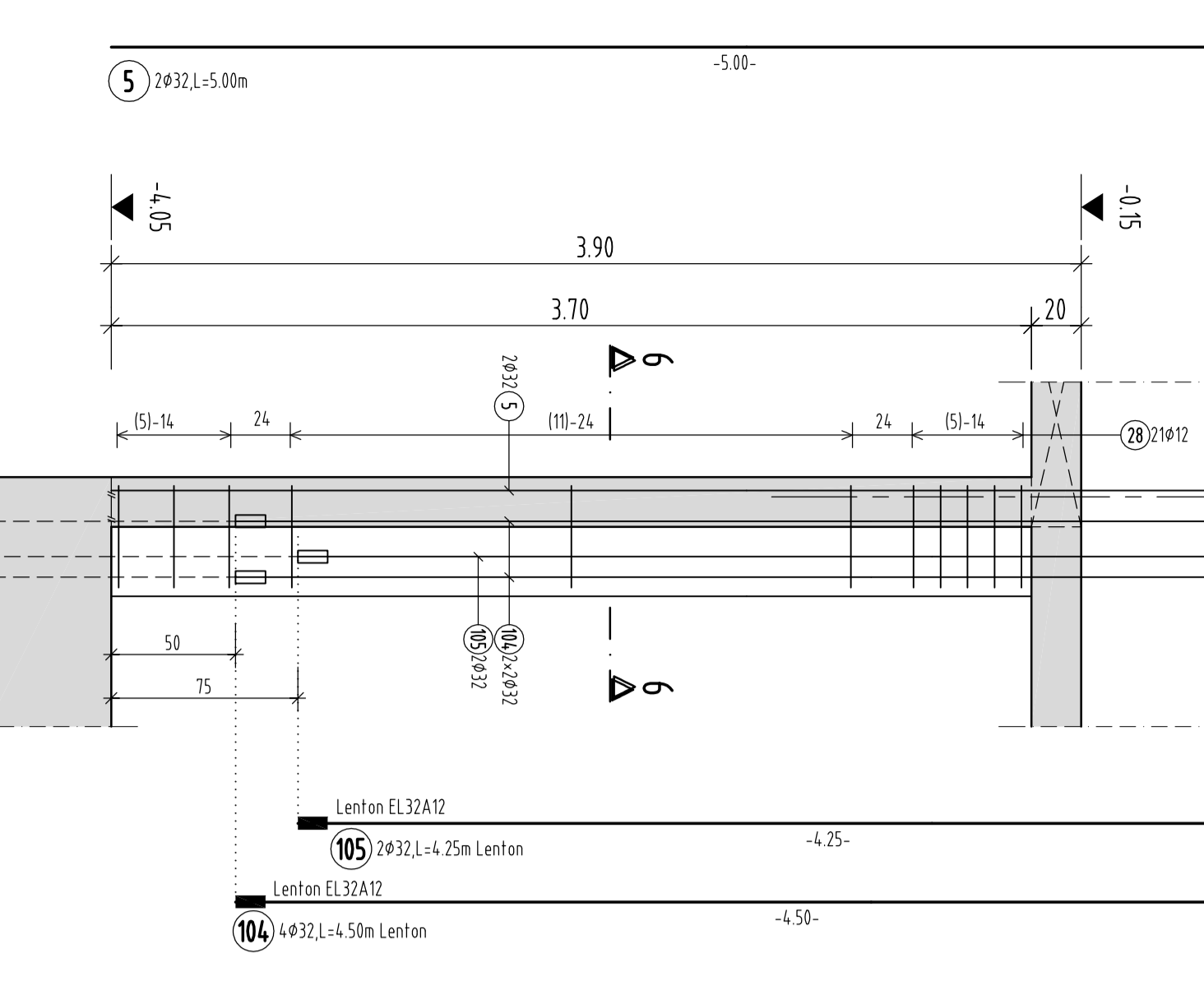
Zu Vorhanden
Stütze Pos.101
M 1:25



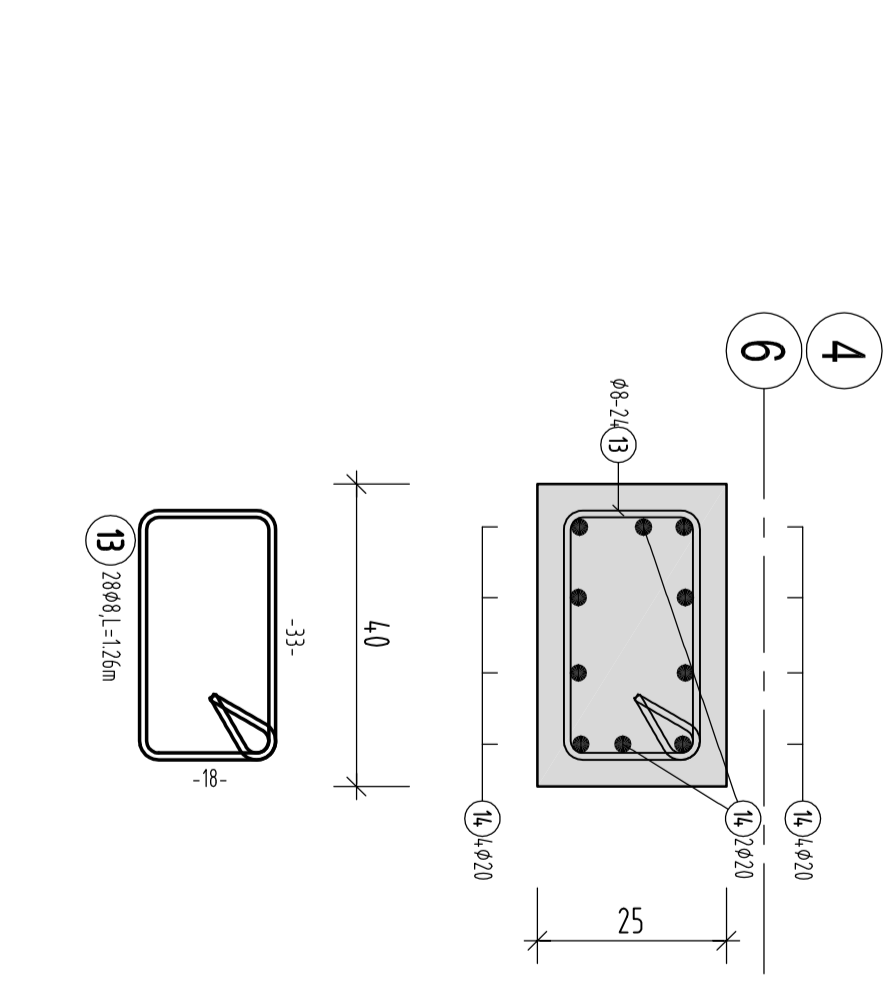
Stütze Pos.103
M 1:25



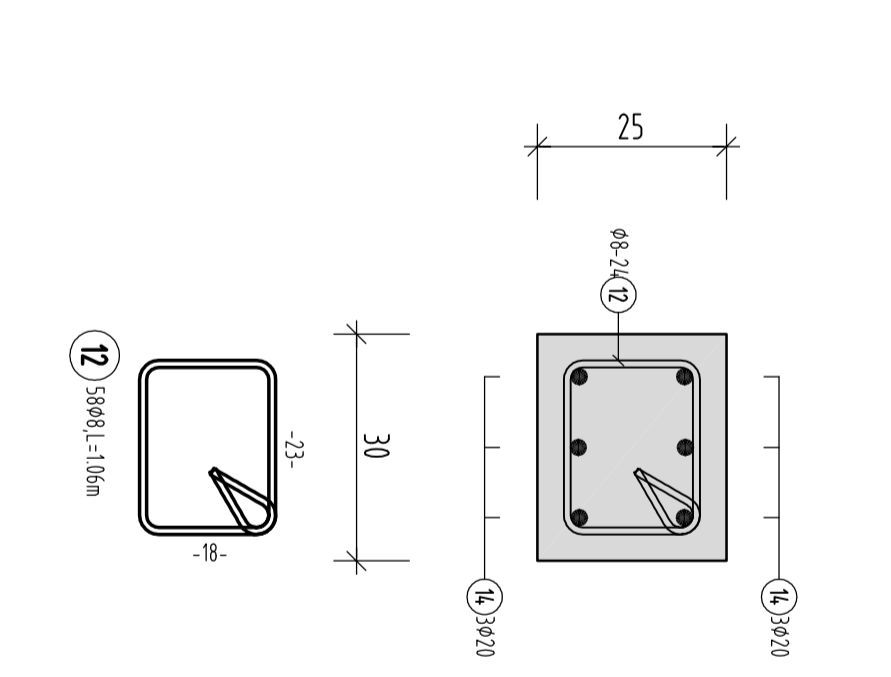
Stütze Pos.102
M 1:25



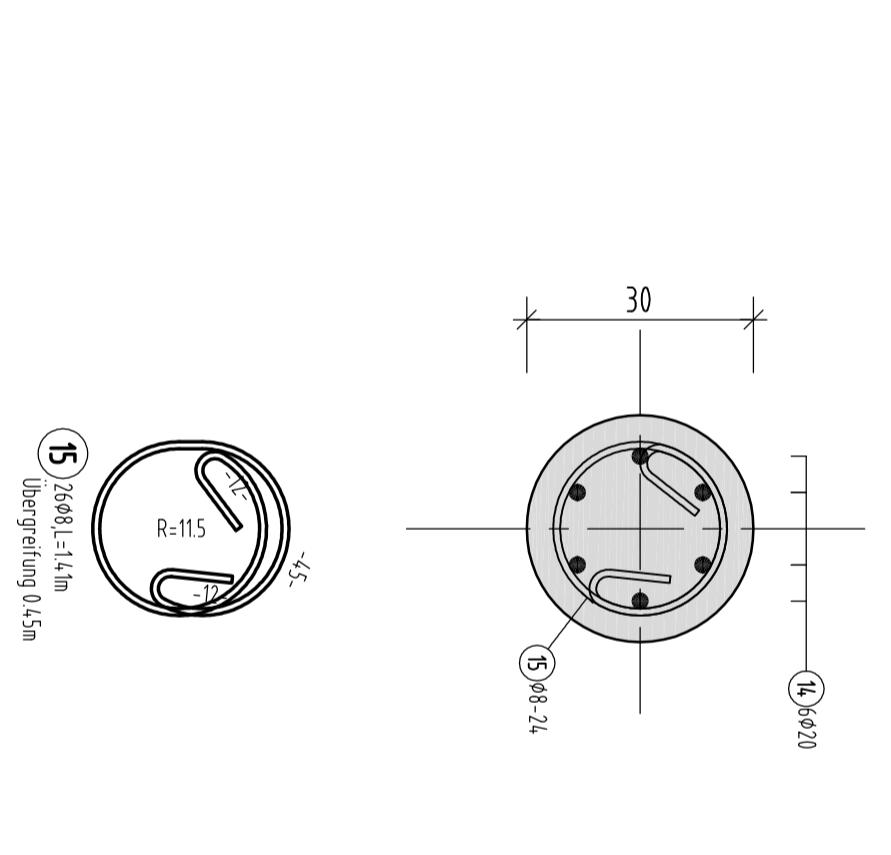
Schnitt 11-11
M 1:10



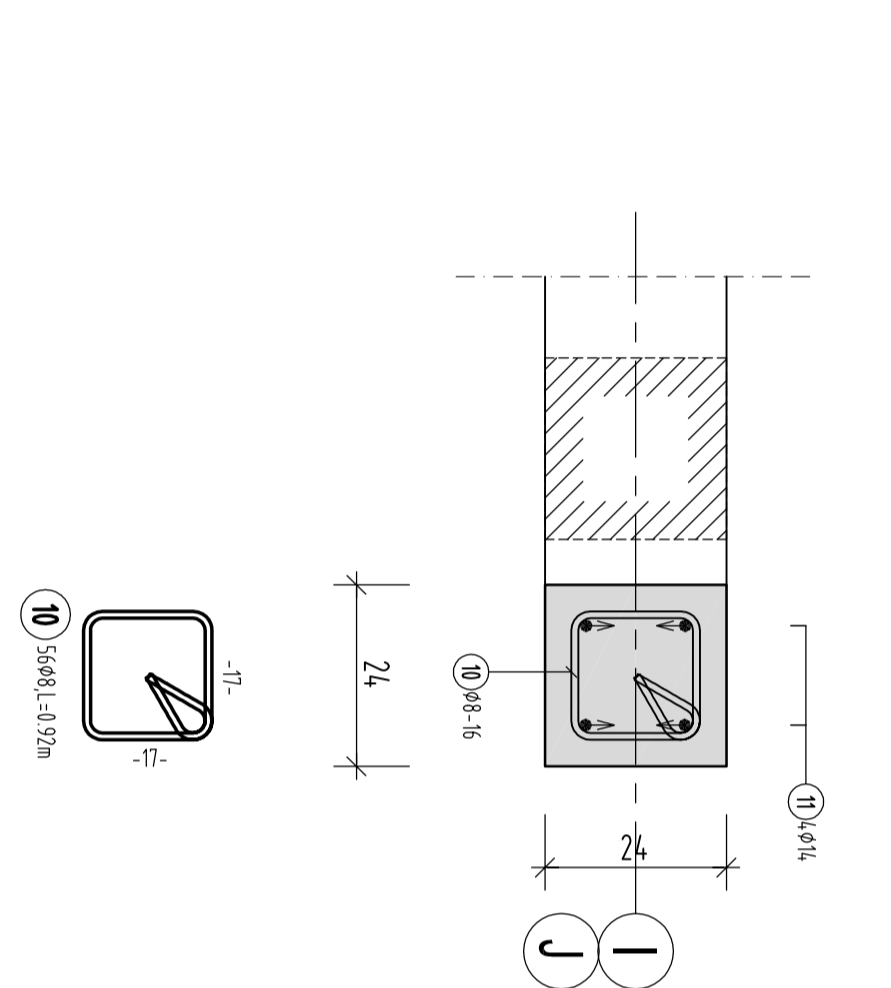
Schnitt 10-10
M 1:10



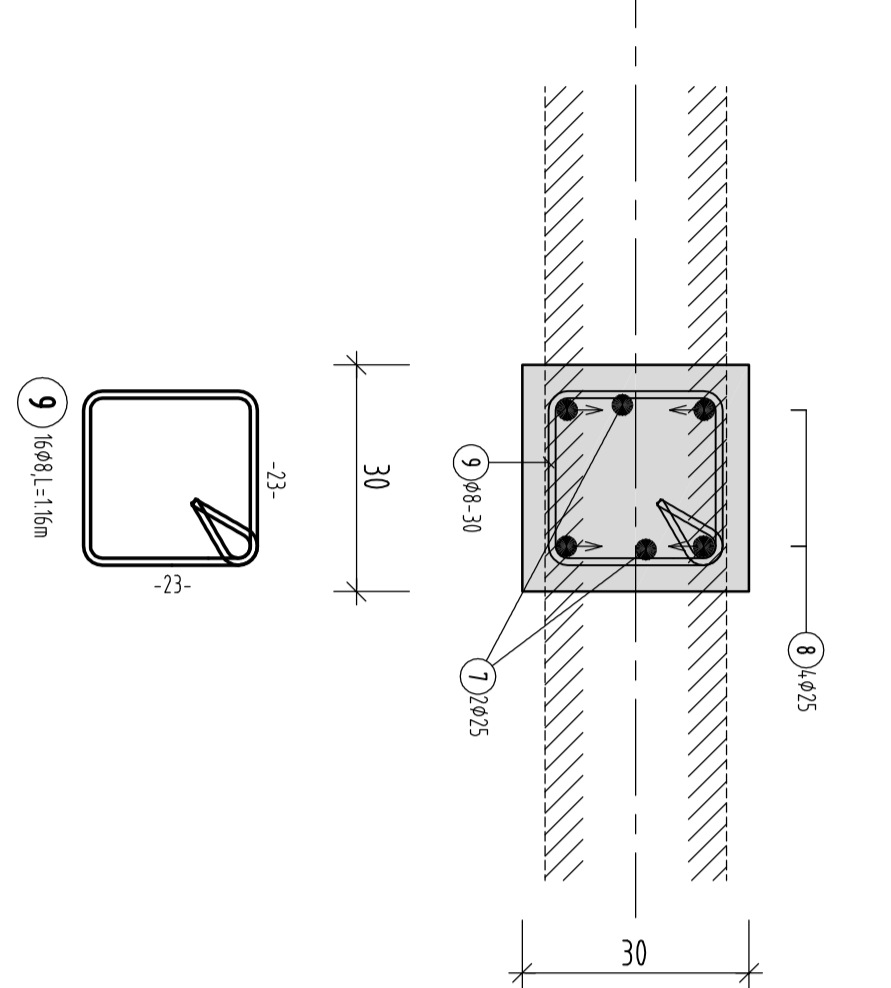
Schnitt 9-9
M 1:10



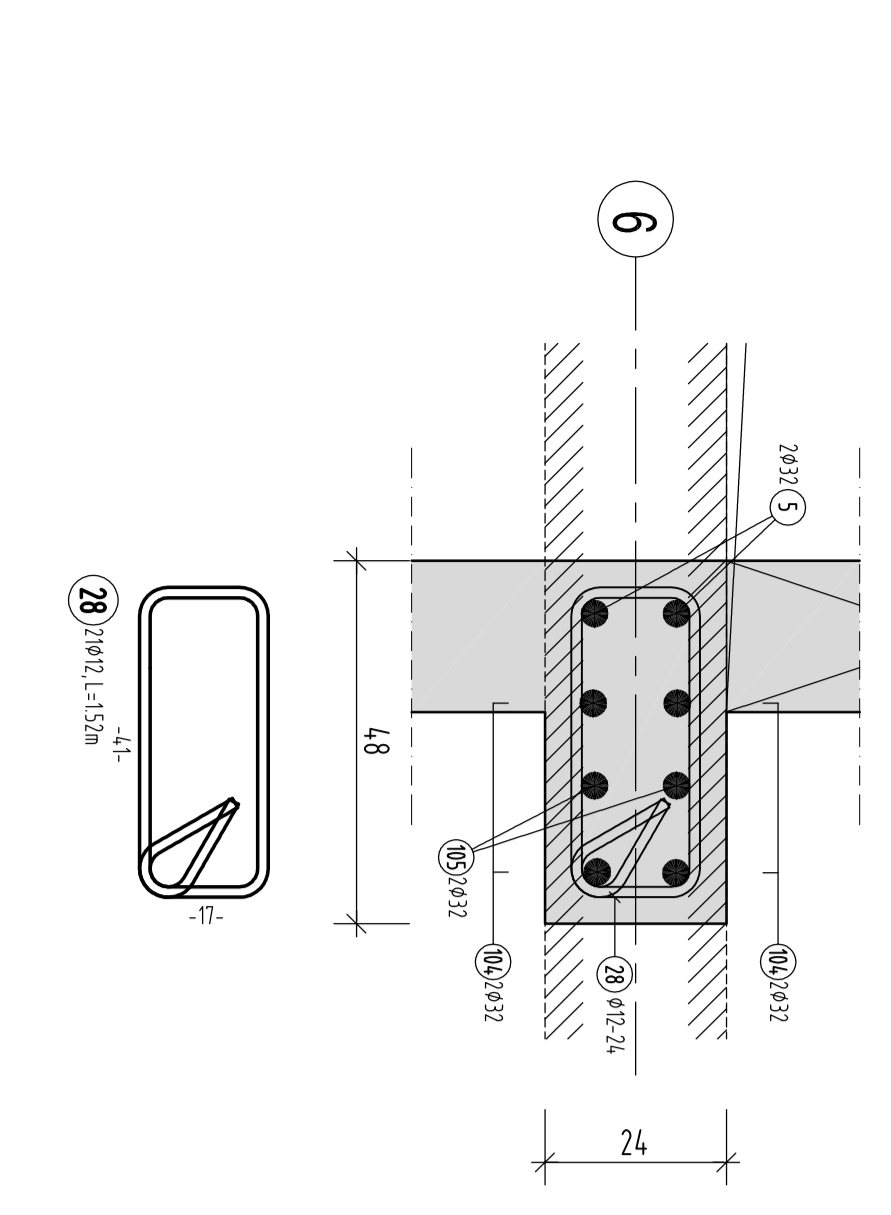
Schnitt 8-8
M 1:10



Schnitt 7-7
M 1:10



Schnitt 6-6
M 1:10



Die Bodenplatten sowie der Spritzbereich der Stützen und Wände erhalten eine zu wartende Beschichtung OSB

ALLE MASSE SIND AM BAU ZU PRÜFEN!

BETONQUOTE	C20/27
ERDBINDENSLAUSSE	X2/ZAWO
BETONDECKUNG	35cm
BETONSTAHL	S500/S50
ZEMENTGEHALT NACH DIN 1045-1	

KORREKTURBEREICH NACH DIN 1045-1
BIEGEROLLENDURCHMESSER NACH DIN 1045-1, TABELLE 23
SOFERN IN DER ZEICHNUNG KEINE ANDEREN WERTE ANGEZEIGT SIND.

Stoßart (mm)	Thema	Stoßart, Regel
<20	Stoßart	4, 4b
20 bis 28	Stoßart	7, 4b
>28	Stoßart	7, 4b
	Abhängigkeit und Größe zur Klimatisierung (Brennwertkessel)	7, 4b
	Stoßart	7, 4b
	Stoßart	7, 4b
	Stoßart	7, 4b